

Die "Anweisung das Accordion zu spielen" ist ein um 1840 im Verlag von J. G. Höselbarth erschienenes Heftchen zum Erlernen des Spielens auf der ein- und zweireihigen Konzertina. Sie ist damit das früheste erhaltene Lehrmaterial für die Konzertina überhaupt. Das Originaldokument befindet sich im Musikinstrumenten-Museum Berlin als Zugabe zu einer zweireihigen Konzertina, die Carl Friedrich Ulig zugeschrieben wird, Kat.-Nr. 5171. Eine PDF-Fassung der "Anweisung" und einen einleitenden Kommentar von Stephen Chambers und Dan Worrall findet man auf der Internetseite:

<http://www.concertina.com/worrall/hoeselbarth-tutor/index.htm>

(S. Hartwig, 4. Febr. 2015)

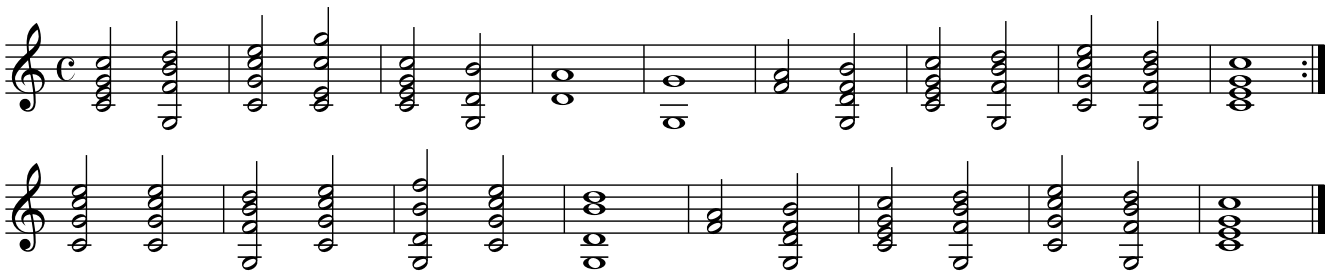
Die Anweisung enthält folgende Noten:

Tabelle für das Accordion.



No. 1

Gott des Himmels und der Erden



No. 2

Nun ruhen alle Wälder



No. 3
Vor deinen Thron tret ich hiermit

Musical score for No. 3, 'Vor deinen Thron tret ich hiermit'. The score is written in C major and common time (C). It consists of two staves. The first staff contains the vocal line, which begins with a half rest followed by a series of quarter notes: G4, A4, B4, C5, B4, A4, G4. The second staff contains the piano accompaniment, starting with a half rest followed by a series of quarter notes: G3, A3, B3, C4, B3, A3, G3. Both staves feature a variety of chords and intervals, with some notes marked with a fermata.

No. 4
Den König segne Gott.

Musical score for No. 4, 'Den König segne Gott.'. The score is written in G major and 3/4 time. It consists of three staves. The first staff contains the vocal line, which begins with a half rest followed by a series of quarter notes: G4, A4, B4, C5, B4, A4, G4. The second and third staves contain the piano accompaniment, featuring a variety of chords and intervals, with some notes marked with a fermata.

No. 5
Marsch.

Musical score for No. 5, 'Marsch.'. The score is written in C major and common time (C). It consists of four staves. The first staff contains the vocal line, which begins with a half rest followed by a series of quarter notes: G4, A4, B4, C5, B4, A4, G4. The second, third, and fourth staves contain the piano accompaniment, featuring a variety of chords and intervals, with some notes marked with a fermata.

No. 6
Schottisch.

Two staves of music for No. 6, Schottisch. The top staff is in treble clef and the bottom staff is in bass clef. The music is in 2/4 time and consists of a series of chords and eighth-note patterns. The piece ends with a double bar line and repeat dots.

No. 7
Tyroler Walzer.

Two staves of music for No. 7, Tyroler Walzer. The top staff is in treble clef and the bottom staff is in bass clef. The music is in 3/4 time and features a melody in the treble and a bass line with chords in the bass. The piece ends with a double bar line and repeat dots.

Ach bleib mit deiner –

A piano accompaniment for the text "Ach bleib mit deiner –". It consists of two staves: a treble clef staff and a bass clef staff. The music is in 2/4 time and features a melody in the treble and a bass line with chords in the bass. The piece ends with a double bar line.

Polka.

Musical score for Polka, tempo 110. The score is in 2/4 time and G major. It consists of two systems of piano accompaniment. The first system has a treble clef with a tempo marking of 110 and a bass clef with an 8-measure rest. The second system has a treble clef with a repeat sign and a bass clef with an 8-measure rest. The music features a rhythmic melody in the treble and a steady accompaniment in the bass.

Galopp.

Musical score for Galopp, tempo 150. The score is in 2/4 time and G major. It consists of three systems of piano accompaniment. The first system has a treble clef with a tempo marking of 150 and a bass clef with an 8-measure rest. The second system has a treble clef with a repeat sign and a bass clef with an 8-measure rest. The third system has a treble clef with a repeat sign and a bass clef with an 8-measure rest. The music features a fast, rhythmic melody in the treble and a steady accompaniment in the bass.

Marsch.

$\text{♩} = 110$

8

(Gallop?)

$\text{♩} = 110$

8